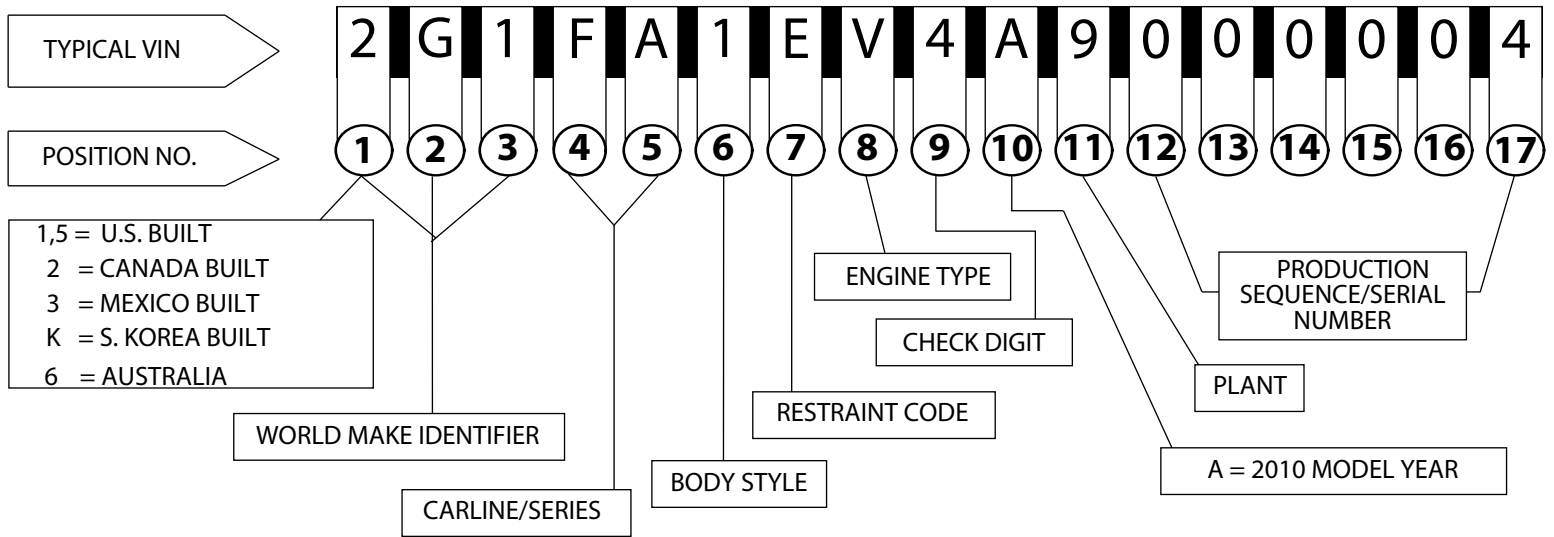




# 2010 PASSENGER CAR VIN SYSTEM



## 1 - 3 WORLD MAKE IDENTIFIER

1	CHEVROLET	1G1, 2G1, 2G1, 3G1, 6G1 (HOLDEN), KL1	6	CADILLAC	1G6
2	PONTIAC	1G2, 2G2, 3G2, 5Y2, KL2	8	SATURN	1G8, W08 (OPEL FOR SATURN)
4	BUICK	1G4, 2G4, 3G4, W04 (OPEL FOR BUICK)		OPEL ROADSTER	1G0

1 - COUNTRY OF ORIGIN	2 - COMPANY	3 - DIVISION
1 OR 5 - U.S. BUILT	G - GENERAL MOTORS	1 - CHEVROLET
2 - CANADIAN BUILT		2 - PONTIAC
3 - MEXICO BUILT		4 - BUICK
6 - AUSTRALIAN BUILT		6 - CADILLAC
K - SOUTH KOREA BUILT		8 - SATURN

## 4-5 CARLINE/SERIES BUICK

H/A - LUCERNE CX CLOTH ENTRY	H/G - LUCERNE CXL LUXURY/CONFIDENCE	G/D - LACROSSE CXL (AWD)
H/B - LUCERNE CX CLOTH PLUS	H/H - LUCERNE SUPER SERIES	G/E - LACROSSE CXS
H/C - LUCERNE CXL LEATHER ENTRY	H/J - LUCERNE ULTRA LUXURY	G/H - Lacrosse/Allure CX (Canada Only)
H/D - LUCERNE CXL SPECIAL EDITION	H/K - LUCERNE SUPER ULTRA	G/J - Lacrosse/Allure CX V6 (Canada Only)
H/E - LUCERNE CXL ULTRA CONFIDENCE	G/A - LACROSSE CX (4 CYL)	G/K - Lacrosse/Allure CXL (FWD) (Ca. Only)
H/F - LUCERNE CXL LUXURY	G/B - LACROSSE CX (V6)	G/L - Lacrosse/Allure CXL (AWD) (Ca. Only)
	G/C - LACROSSE CXL (FWD)	G/M - Lacrosse/Allure CXS (Canada Only)

## 4 - 5 CARLINE/SERIES - CADILLAC

D/A - CTS BASE	D/N - CTS PREMIUM COLLECTION	K/A - DTS BASE
D/B - CTS BASE W/NAVIGATION	D/P - CTS PREMIUM COLLECTION W/NAV.	K/B - BASE W/NAVIGATION
D/C - CTS BASE (AWD)	D/R - CTS PREMIUM COLLECTION (AWD)	K/D - DTS LUXURY COLLECTION
D/D - CTS BASE W/NAVIGATION (AWD)	D/S - CTS PREMIUM COLL. W/NAV. (AWD)	K/F - DTS LUX. COLL. W/NAV.
D/E - CTS LUXURY COLLECTION	D/T - CTS RHD	K/G - DTS PREMIUM COLLECTION
D/F - CTS LUXURY COLLECTION W/NAV.	D/U - STS ALL COLLECTION	K/H - DTS PREMIUM COLL. W/NAV.
D/G - CTS LUXURY COLLECTION (AWD)	D/V - CTS V	K/J - DTS PERFORMANCE COLL.
D/H - CTS LUXURY COLL. W/NAV. (AWD)	D/W - STS V	K/K - DTS PERF. COLL. W/NAV.
D/J - CTS PERFORMANCE COLLECTION	D/X - STS RHD	K/L - DTS PLATINUM LUX. ED.
D/K - CTS PERFORMANCE COLL. W/NAV.	D/Z - ALL NON - RHD EXPORT VEHICLES	K/M - DTS PLAT. LUX. ED. W/NAV.
D/L - CTS PERFORMANCE COLL. (AWD)	D/0 - CTS SPORT APPEARANCE PACKAGE	K/N - DTS PLAT. PERF. EDITION
D/M - CTS PERF. COLL. W/NAV.(AWD)	D/1 - CTS ECO LUXURY PACKAGE	K/P - DTS PLAT. PERF. ED.W/NAV.
		K/R - DTS LIVERY



# 2010 PASSENGER CAR VIN SYSTEM

## 4-5 CARLINE/SERIES - CHEVROLET

A/A - COBALT LS M/T	P/D - Cruze Base (NON-U.S.)	Y/J - CORVETTE Z06 STANDARD 1LZ M/T
A/B - COBALT LS A/T	P/J - Cruze LS (NON-U.S.)	Y/K - CORVETTE Z06 PREMIUM 2LZ M/T
A/C - COBALT 1LT M/T	P/M - Cruze LT (NON-U.S.)	Y/L - CORVETTE Z06 CUSTOM 3LZ M/T
A/D - COBALT 1LT A/T	T/A - AVEO BASE	Y/M - CORVETTE ZR1 STANDARD 1ZR M/T
A/E - COBALT 2LT M/T	T/B - AVEO MID-LEVEL TRIM	Y/N - CORVETTE ZR1 CUSTOM 3ZR M/T
A/F - COBALT 2LT A/T	T/C - AVEO UP-LEVEL TRIM	Y/P - CORVETTE GRAND SPORT 1LT M/T
A/G - COBALT SS	T/D - AVEO 1LS/1LT	Y/R - CORVETTE GRAND SPORT 2LT M/T
A/H - COBALT INTERNET MODEL M/T	T/G - AVEO 2LT	Y/S - CORVETTE GRAND SPORT 3LT M/T
A/J - COBALT INTERNET MODEL A/T	W/A - IMPALA LS	Y/T - CORVETTE GRAND SPORT 4LT M/T
F/A - CAMARO LS A/T	W/B - IMPALA LT	Y/U - CORVETTE GRAND SPORT 1LT A/T
F/B - CAMARO LT A/T	W/C - IMPALA LTZ	Y/V - CORVETTE GS 2LT A/T
F/C - CAMARO LT2 A/T	W/D - IMPALA POLICE CRUISER	Y/W - CORVETTE GS 3LT A/T
F/E - CAMARO LS M/T	W/E - IMPALA TAXI	Y/X - CORVETTE GS 4LT A/T
F/F - CAMARO LT M/T	Y/A - CORVETTE STANDARD 1LT M/T	Z/A - MALIBU FLEET VEHICLE
F/G - CAMARO LT2 M/T	Y/B - CORVETTE PREFERRED 2LT M/T	Z/B - MALIBU LS
F/J - CAMARO SS A/T	Y/C - CORVETTE PREMIUM 3LT M/T	Z/C - MALIBU 1LT
F/K - CAMARO 2SS A/T	Y/D - CORVETTE CUSTOM 4LT M/T	Z/D - MALIBU 2LT
F/S - CAMARO SS M/T	Y/E - CORVETTE STANDARD 1LT A/T	Z/E - MALIBU LTZ
F/T - CAMARO 2SS M/T	Y/F - CORVETTE PREFERRED 2LT A/T	Z/F - MALIBU HYBRID
	Y/G - CORVETTE PREMIUM 3LT A/T	
	Y/H - CORVETTE CUSTOM 4LT A/T	

## 4-5 CARLINE/SERIES PONTIAC

A/A - G5 BASE M/T	M/A - SOLSTICE BASE A/T	S/N - VIBE GT FWD M/T
A/B - G5 BASE A/T	M/B - SOLSTICE TURBO A/T	S/P - VIBE FWD A/T
A/C - G5 SE M/T	M/D - SOLSTICE BASE M/T	S/R - VIBE GT FWD A/T
A/D - G5 SE A/T	M/E - SOLSTICE TURBO M/T	T/A - G3 WAVE BASE (NON - US)
A/E - G5 GT M/T	M/D - G2 MATIZ S (NON - US)	T/B - G3 WAVE MID LVL. TRIM (NON - US)
A/F - G5 GT A/T	M/J - G2 MATIZ SE (NON - US)	T/C - G3 WAVE UP LVL. TRIM (NON - US)
E/C - G8 GT	M/M - G2 MATIZ SX (NON - US)	Z/A - G6 BASE
E/P - G8 GXP	S/L - VIBE FWD M/T	Z/B - G6 GT
E/R - G8 BASE	S/M - VIBE AWD	Z/C - G6 GXP

## 4-5 CARLINE/SERIES SATURN

M/B - SKY TURBO A/T	Z/A - AURA XV	Z/E - AURA XR-L V6
M/C - SKY PREFERRED A/T	Z/B - AURA XE	Z/F - AURA XR-L V6 PREMIUM
M/E - SKY TURBO M/T	Z/C - AURA XR-L 4	
M/F - SKY PREFERRED A/T	Z/D - AURA XR-L 4 PREMIUM	



# 2010 PASSENGER CAR VIN SYSTEM

## 6 BODY STYLE - GM STYLE CODE

GM EQUIVALENT BODY CODES		GM EQUIVALENT BODY CODES	
1	27 - COUPE, 2 - DOOR, NOTCHBACK 37 - COUPE, 2 - DOOR, NOTCHBACK 47 - COUPE, 2 - DOOR, NOTCHBACK SPECIAL 57 - COUPE, 2 - DOOR, NOTCHBACK SPECIAL	6	26 - ALL PURPOSE WINDOW 4DR, LIFTGATE 29 - SEDAN, 4 DR, 4 WINDOW, PLAIN BACK 48 - SEDAN, 4 DR, 4 WINDOW, HATCHBACK 68 - SEDAN, 4DR, 6WNDW, PLAINBACK, H/BACK
2	07 - COUPE, 2 - DOOR, PLAIN BACK 08 - SEDAN, 2 - DOOR, PLAIN BACK, H/BACK 77 - COUPE, 2 - DOOR, PLAIN BACK, H/BACK 87 - COUPE, 2 - DOOR, PLAIN BACK, SPECIAL	7	06 - MPV, 4 DR, HIGH ROOF MONOCAB (OPAL) 46 - MPV, 4 - DOOR, HIGH ROOF HATCHBACK
3	67 - COUPE, 2 - DOOR, CONVERTIBLE	8	35 - STATION WAGON, 4 - DOOR
5	19 - SEDAN, 4-DOOR, 6 WINDOW, NOTCHBACK 69 - SEDAN, 4-DOOR, 4 WINDOW, NOTCHBACK	9	75 - STATION WAGON, 4 - DOOR HIGH ROOF MONOCAB

## 7 RESTRAINT CODES

RPO	CODE	RESTRAINT SYSTEM DESCRIPTION
AR1	A	ACTIVE MANUAL BELTS, AIRBAG DELETE
AJ3	B	ACTIVE MANUAL BELTS, AIRBAG - DRIVER ONLY - FRONT
AK5, ADM, ADL, ASA	C	ACTIVE MANUAL BELTS, AIRBAG - DRIVER & PASSENGER - FRONT (1st ROW)
AJ7, AJG, AJ9	D	ACTIVE MANUAL BELTS, AIRBAGS - DRIVER & PASSENGER - FRONT (1st ROW), & FRONT SEAT SIDE (1st ROW)
AY0, AYC & ASF	E	ACTIVE MANUAL BELTS, AIRBAGS - DRIVER & PASSENGER - FRONT (1st ROW), & FRONT SEAT SIDE (1st ROW), ROOF SIDE (ALL SEATING ROWS)
AWX, AY1, ADM & ASF	F	ACTIVE MANUAL BELTS, AIRBAGS - DRIVER & PASSENGER - FRONT (1st ROW), & ROOF SIDE (ALL SEATING ROWS)
AW7, ASF	G	ACTIVE MANUAL BELTS, AIRBAGS - DRIVER & PASSENGER - FRONT (1st ROW), & REAR SEAT SIDE (2nd ROW), ROOF SIDE (ALL SEATING ROWS)
AY0, AAJ, AAH	H	ACTIVE MANUAL BELTS, AIRBAGS - DRIVER & PASSENGER - FRONT (1st ROW), FRONT SEAT SIDE (1st row), ROOF SIDE (ALL SEATING ROWS) & KNEE (1st ROW)



# 2010 PASSENGER CAR VIN SYSTEM

## 8 ENGINE TYPE

CODE	ENG. RPO	DISP.	CYL.	FUEL SYSTEM	DIV. USAGE
A	LH2	4.6L	V8	SFI	1, 6
B	LE5	2.4L	I4	MFI	1, 2, 8
C	LAF	2.4L	I4	SIDI	4, 8
D	LC3	4.4L	V8	MFI	6
E	LS7	7.0L	V8	SFI	1, 2
E	LXV	1.6L	I4	I4	1, 2
G	LF1	3.0L	V6	SIDI	4, 6
H	L98	6.0L	V8	SFI	1
J	L99	6.2L	V8	SFI	1
K	LZE	3.5L	V6	SFI	1, 2
M	LGD	3.9L	V6	SFI	1, 4
N	LZ4	3.5L	V6	SFI	1, 2
P	LSA	6.2L	V8	SFI	6
T	LS9	6.2L	V8	SFI	1
V	LLT	3.6L	V6	SIDI	1, 6
W	LS3	6.2L	V8	SFI	1
X	LNF	2.0L	I4	DI	1, 2, 8
Y	L76	6.0L	V8	SFI	2
Y	LD8	4.6L	V8	MFI	4, 6
Z	LAT	2.4L	I4	MFI	8
1	LZ9	3.9L	V6	SFI	2
2	LBF	.08L	I3	MPI	2
4	LUU	1.4L	I4	MFI	2 (VOLT)
5	LAP	2.2L	I4	MFI	1, 8
6	LXT	1.6L	I4	MFI	1
7	LY7	3.6L	V6	SFI	1,2,4,6,8
8	LAY	1.8L	I4	SFI	2
9	L37	4.6L	V8	MFI	6
0	LE9	2.4L	I4	MFI	1, 2
0	LAX	2.4L	I4	SFI	2
0	LA2	1.0L	I4	MFI	2



# 2010 PASSENGER CAR VIN SYSTEM

## VIN POSTION 9

CHECK DIGIT

## VIN POS. 10 MODEL YEAR

A = 2010

## 11 PLANT

VIN POSITION 1 IS "1" OR 4" (U.S.A.):			VIN POSITION 1 IS "3" (MEXICO):		
F	FAIRFAX II	KS	S	RAMOS	MEX
U	HAMTRAMCK	MI	L	SAN LUIS POTOSI	MEX
Y	WILMINGTON	DE			
Z	SPRING HILL	TN	VIN POSITION 1 IS "6" (AUSTRALIA)		
0	LANSING – GRAND RIVER	MI	L	ELIZABETH	SA
4	ORION	MI			
5	BOWLING GREEN	KY	VIN POSITION 1 IS "K" (S. KOREA):		
7	LORDSTOWN	OH	B	BUPYUNG	S. KOREA
			C	CHANGWON	S. KOREA
VIN POSITION 1 IS "2" (CANADA):			K	KUSAN	S. KOREA
1	OSHAWA #2	ON			
6	INGERSOLL	ON	VIN POSITION 1 IS "L" ( SGM ):		
9	OSHAWA #1	ON	0	SHANGHAI	CHINA
			VIN POSITION 1 IS 'W' (OPEL):		
			5	ANTWERP	BELGIUM

General Motors, Service Operations, 30501 Van Dyke, Warren, MI 48090

©2009 General Motors. All Rights Reserved.

03-07-2012 R1.6